

# THE



## WORST INVASIVE **ANTS** IN THE PACIFIC



# What are we going to learn today?

- 1) What are the top five invasive ant pests, the problems they cause people, agriculture and the natural environment.
- 2) Learn about the life cycle and structure of their colony.



# Let's recap

In our previous lesson, we

- 1) learnt that an ant is a living thing.
- 2) learnt that not all ants are invasive.
- 3) discussed the positive and negative impacts of ants on our environment.



# The five **WORST** invasive **ANTS** in the Pacific



African big-headed ant



Red imported fire ant



Argentine ant



Yellow crazy ant



Little fire ant

You can't tell just by looking at these five ant species that they cause worse problems than any other ants

# Invasive Ants Icon Guide



Bites!



Sprays acid!



Stings!



Harms crops



Harms people



Harms wildlife

# The five **WORST** invasive **ANTS** in the Pacific



African big-headed ant



Red imported fire ant



Yellow crazy ant



Argentine ant



Little fire ant

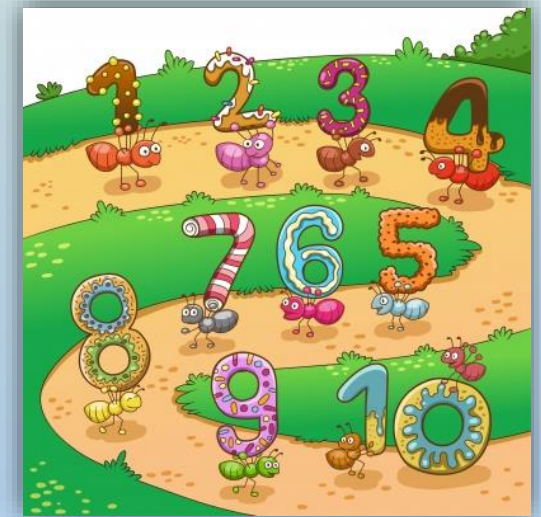


# Video on Fire Ants by SPREP



# Activity 1

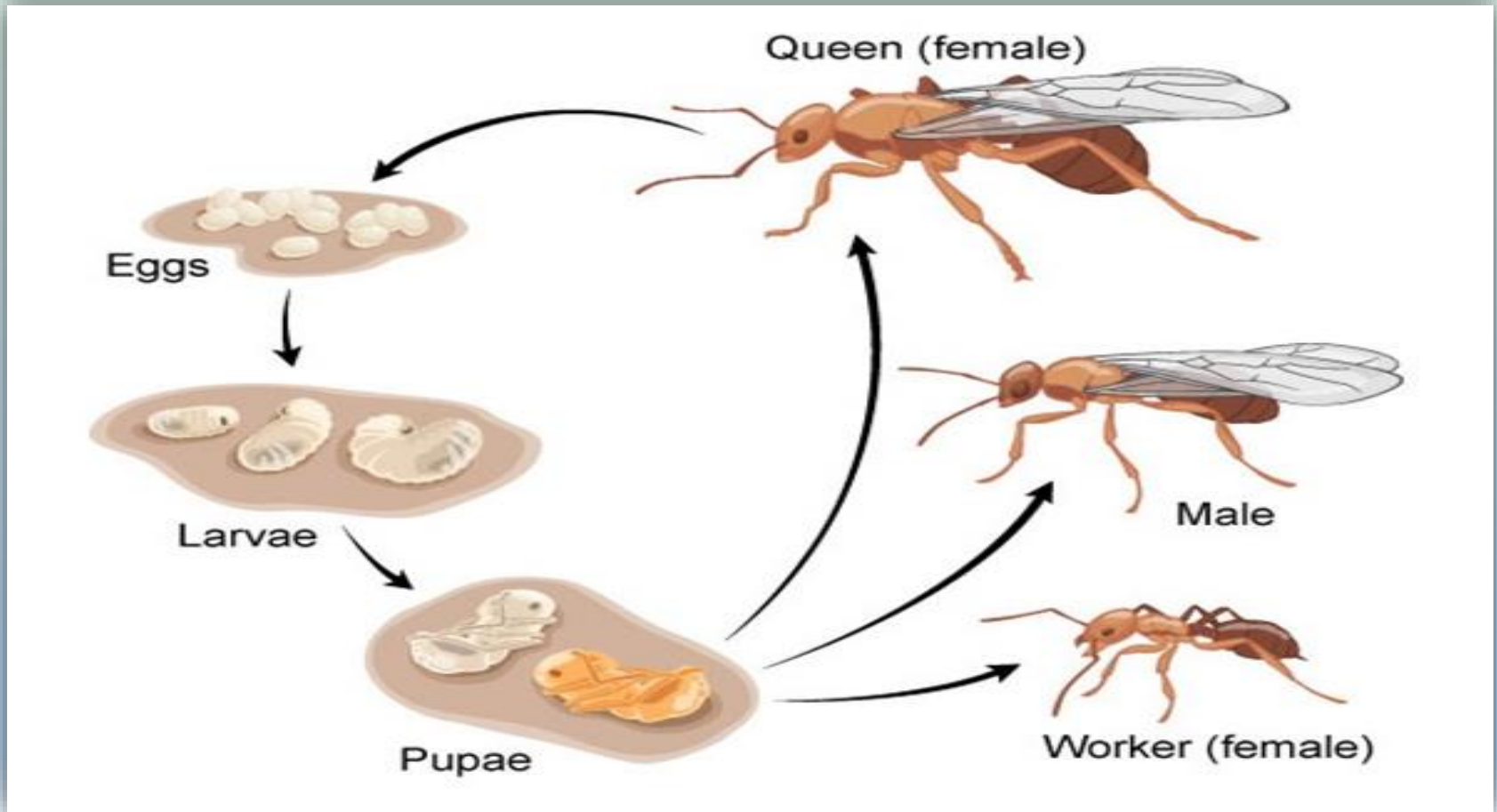
- Discuss the icons and their effects for each of the ant species.
- What do you think their impacts are on:
  - People
  - Agriculture
  - Environment
- Record your discussion on a mind map.





# Ant life cycle

Ants go through a number of different stages from egg to adult. They have a 4 stage life-cycle just like the butterfly!



One or more queens lay eggs that develop into new workers, queens and males.

# Ant hunt!



- We are going to hunt for ants now!
- This is an opportunity to go on the look out for ants.

## Some simple rules to remember:

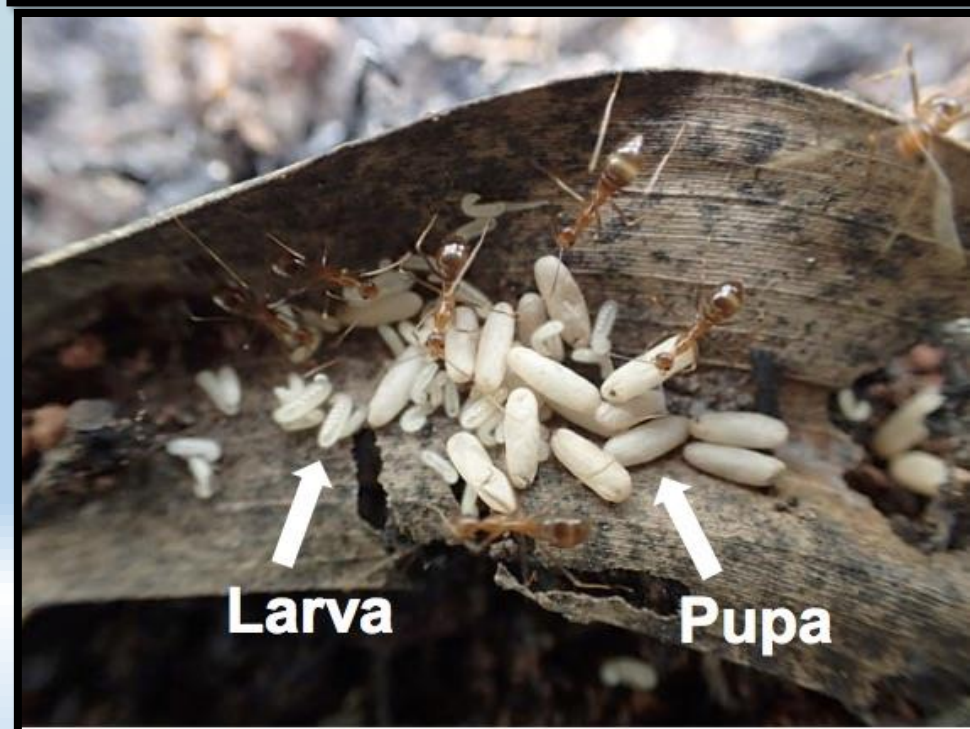
- 1) Always take care of one another.
- 2) Take care not to damage any other parts of nature.
- 3) If in doubt, always ask the teacher.
- 4) Be back to the classroom on time.

# Activity 2

- 1) Have a look for some ants outside.
- 2) Follow them back to their nest.
- 3) Dig up the nest (make sure the ants don't sting or bite first though)!
- 4) Count up the number of different life stages in the nest.

Ask yourselves these questions:

- 1) Can you see workers? Are there any queens?
- 2) Do any of the ants have wings?
- 3) Can you tell apart the workers from the queens?
- 4) Can you see eggs, larvae and pupae?



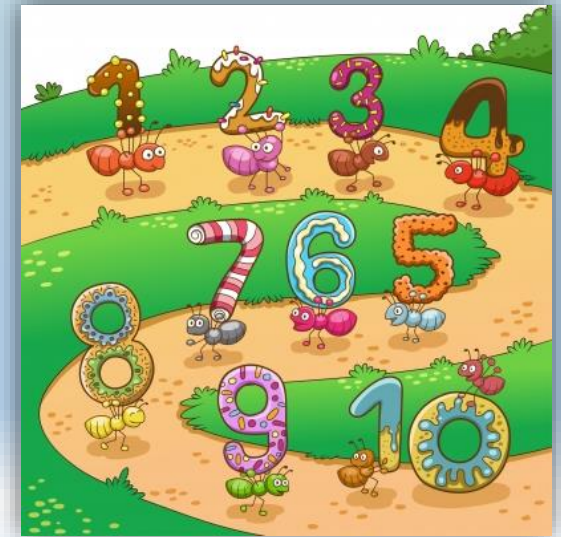
# What we have learnt today

- There are 5 worst invasive ants in the pacific.
- Collectively, they bite, spray acid, sting, harm crops, harm people and harm wildlife.
- The ant goes through a 4 stage life-cycle similar to a butterfly.
- Ants are social creatures and they live in colonies where they have specific roles



# Share with your family today!

- We had an exciting day today! Can you go back home and share at least 2 ways the invasive ants are harmful?
- You can use the red icons to help guide your sharing!



# See you next time!

